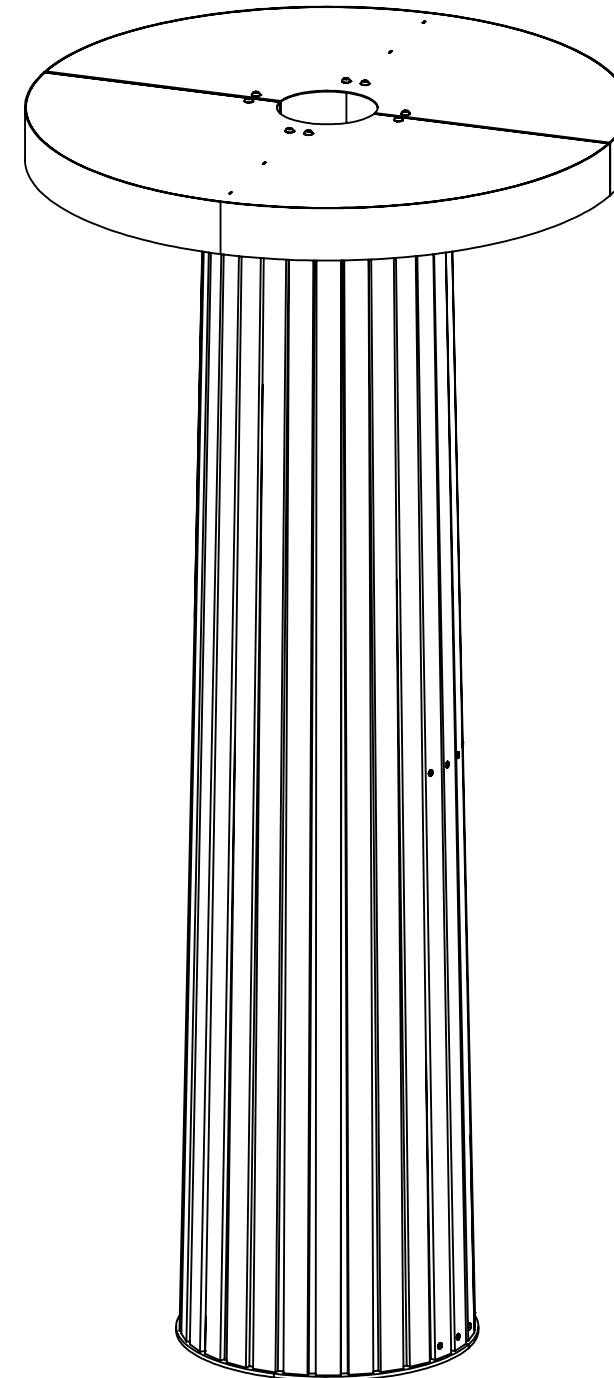


# Instructions

## Bill Post Community Notice Board

### Table of Contents

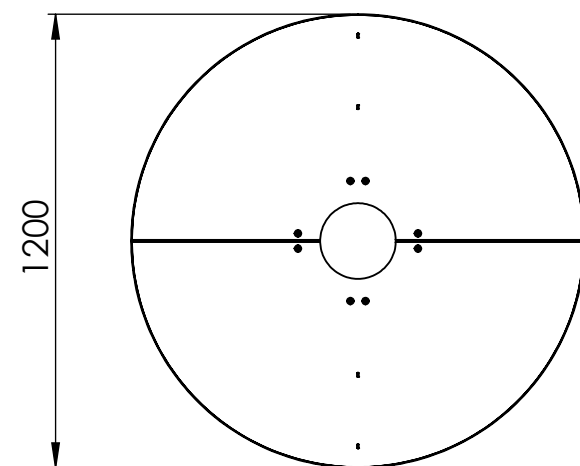
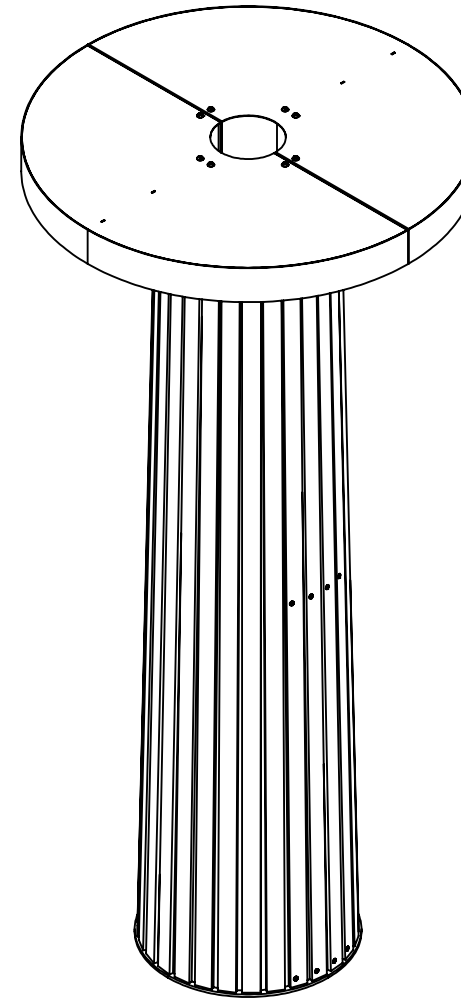
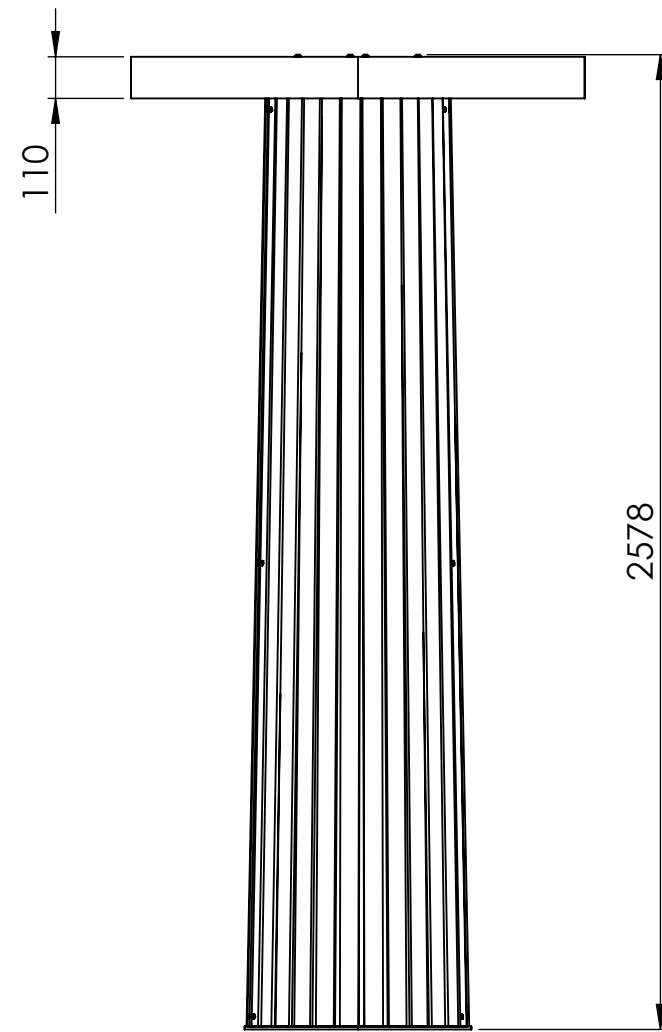
Product info 10-21 Bill Post	s. 2
Installation	s. 3
Attachment to ground	s. 4
Deinstallation	s. 5



# Bill Post

## Product information

Ritad av Odin Sollie  
Ritad datum 2022-11-14



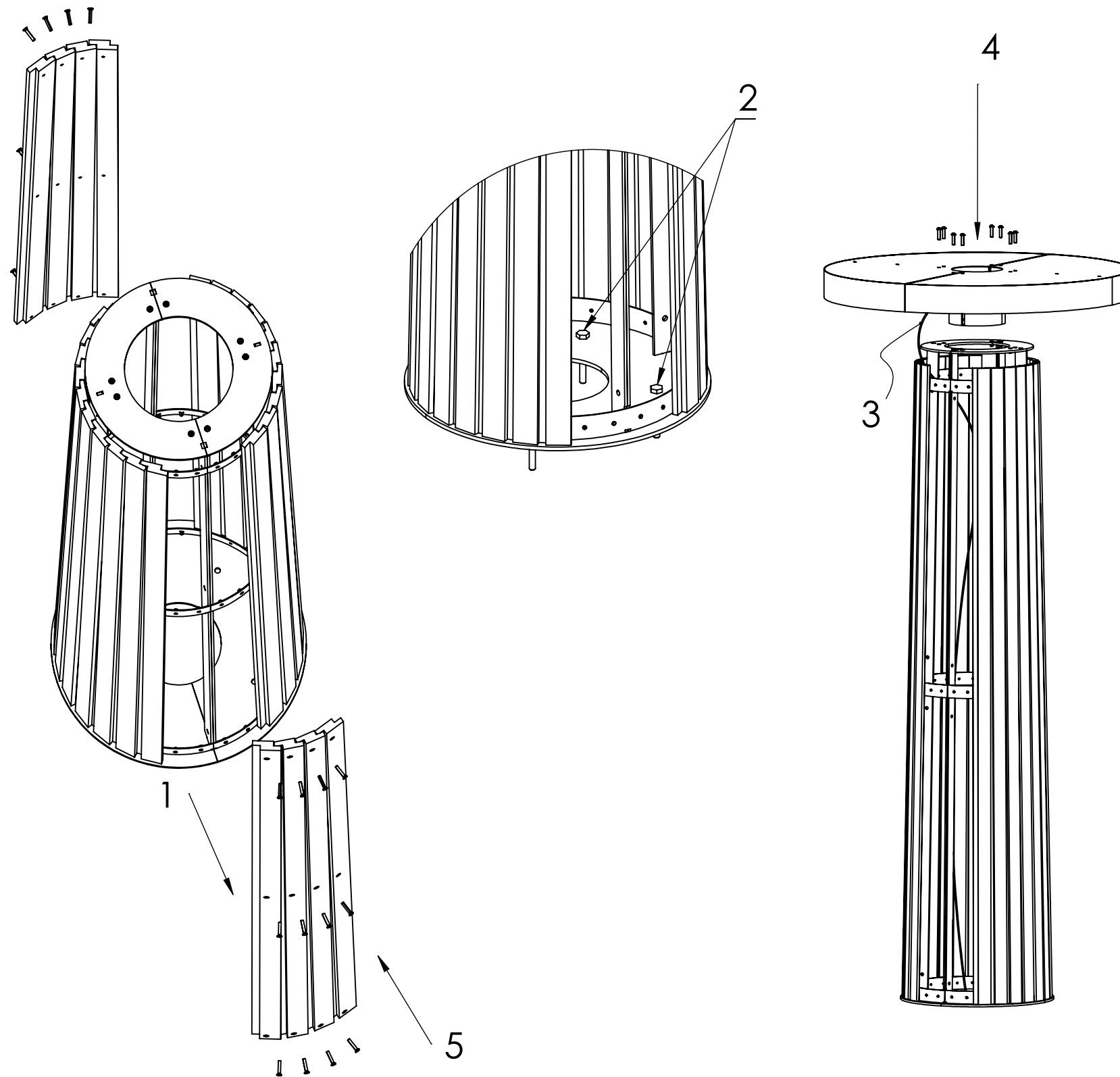
U10-21 Bill Post Community  
notice board with lightning

Weight ca: 130 kg

Delivered partially assembled

# Bill Post Installation

Ritad av Odin Sollie  
Ritad datum 2022-11-14



Bill Post is delivered partially assembled

Delivery includes the following parts:

- 1 st Notice board pillar
- 1 st Top/Lighting fixture
- 8 st M10x40 bolts + washers

Assemble according to following steps:

- 1) Remove the 8 non-fixed boards using the visible machine screws.
- 2) Attach the pillar to the ground, see next page for instructions
- 3) Pull up the electrical cable to the lighting inside the pillar, and in the gap between the boards and the steel frame.
- 4) Install the light fixture by placing it on top of the pillar and securing it via the 8 M10 X 40 bolts and washers.  
ATTENTION: The light fixture weighs 40 kg and requires caution when lifting. Be careful not to pinch the electrical cable.

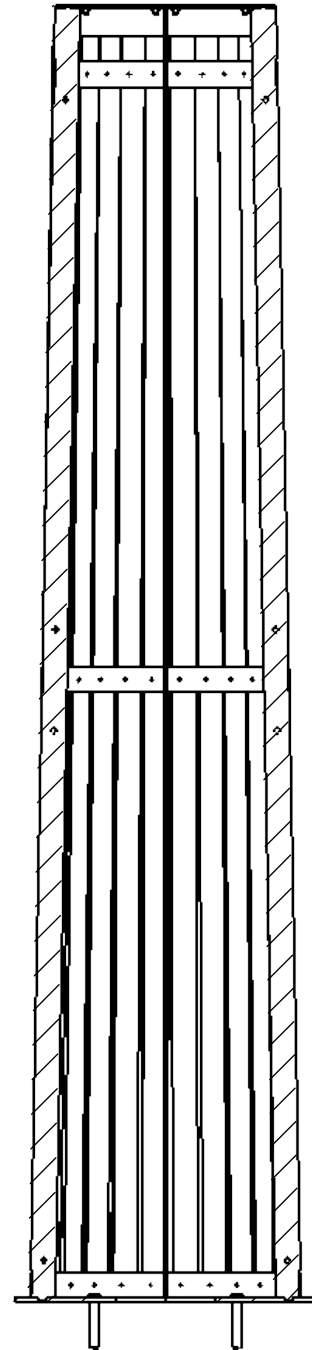
Attach the fixture using the bolts. Note that the joint in the fixture should be orient 90 degrees from the joint in the pillar. Connect the electricity. The driver is normally installed in the light fixture, and a 220 V cable is supplied. This can however vary depending on local specifications. Contact Nola with specific questions regarding electrical installations.

- 5) Once the pillar is securely attached to the ground, and the lighting fixture is installed and connected the non-fixed boards can be reinstalled.

# Bill Post

## Attachment to ground

Ritad av Odin Sollie  
Ritad datum 2022-11-14



Place pillar in desired location. Mark locations for fasteners, drill holes and mount pillar to the surface. Holes in the base plate are 13 mm in diameter and installation is done using M12 fasteners.

### Installation on wood surfaces

Pre-drill and install using wood screws

### Installation on stone or concrete pavers

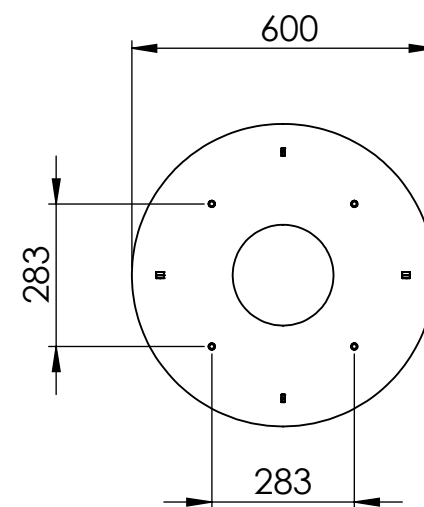
Cast pavers in cement. There should not be leveling sand between the paver and the cement. Drill the paver for expander bolts or chemical anchors. Installation using expander bolts gives a removable attachment, chemical anchors give a permanent attachment.

### Installation on concrete

Drill concrete for expander bolts or chemical anchors.

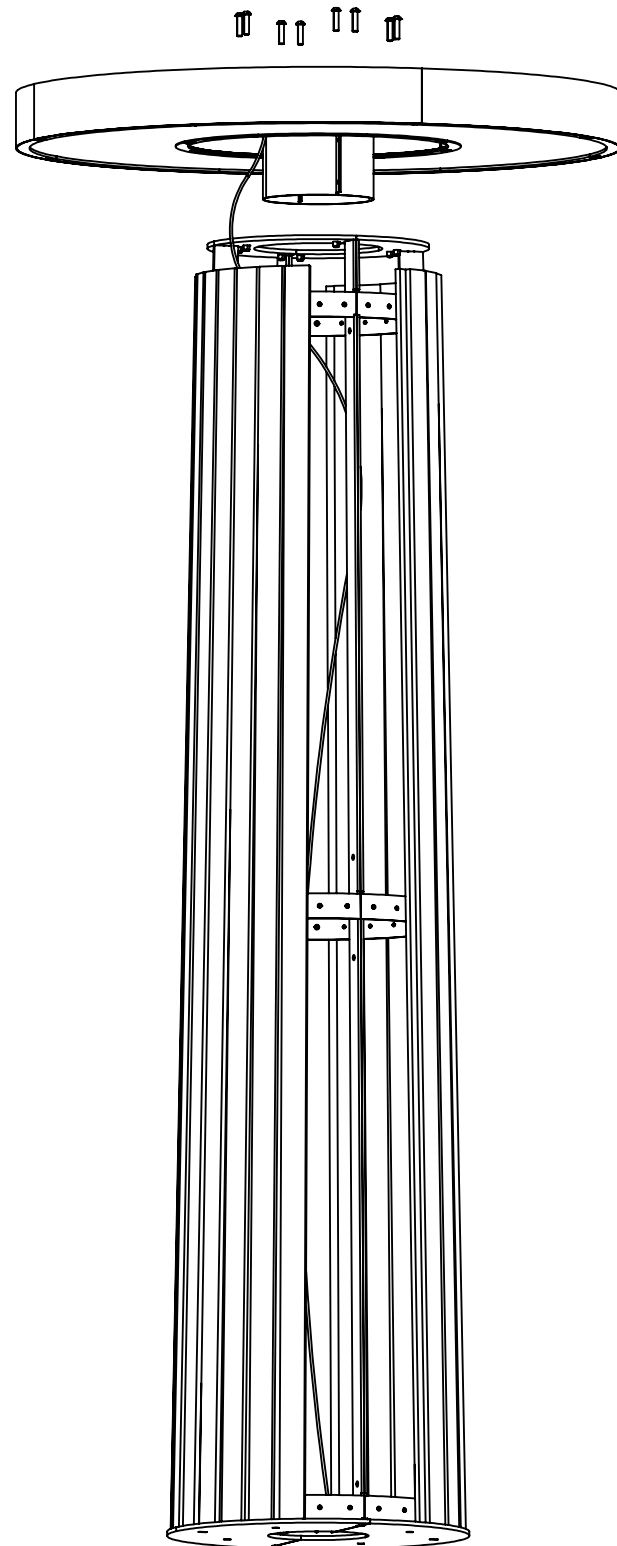
### Installation in grass or gravel

Excavate for a concrete foundation. Cast a foundation in a concrete pipe or cardboard tube. The top of the foundation should have a radius. Drill the foundation for expander bolts or chemical anchors.



# Bill Post Deinstallation

Ritad av Odin Sollie  
Ritad datum 2022-11-14



## Refurbishing, Deinstallation and Recycling

The electrical cable in Bill Post should never be accessible to the public. Replacement of old board in the pillar should therefore never be performed before receipt of new boards.

Board can be replaced with disassembly of the pillar. The 8 non-fixed boards with visible fasteners can be changed out individually. Other boards can be replaced by removing 4 non-fixed boards so that their fasteners can be accessed from the inside of the pillar.

In case of repairs or replacement of larger parts, Bill Post is disassembled into the same parts it was delivered in and sent back to the supplier. If it is to be recycled, it is taken apart completely so that electronic components, wood and steel parts are separated so they can be taken to a suitable recycling location.