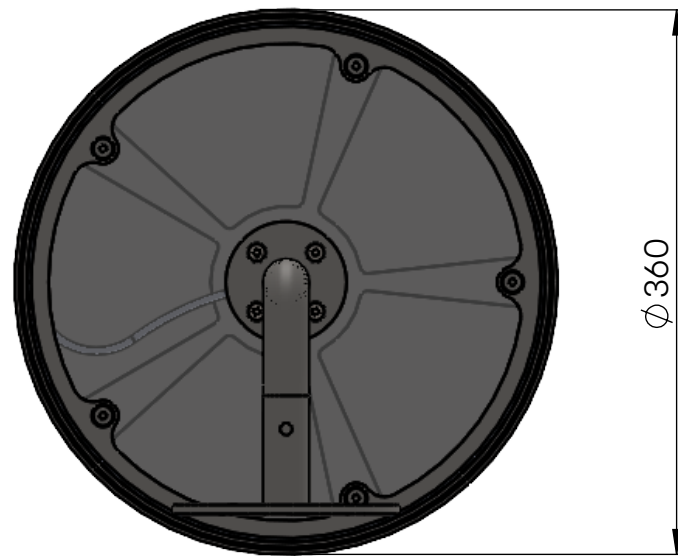


Ljusnan accessory table with lighting

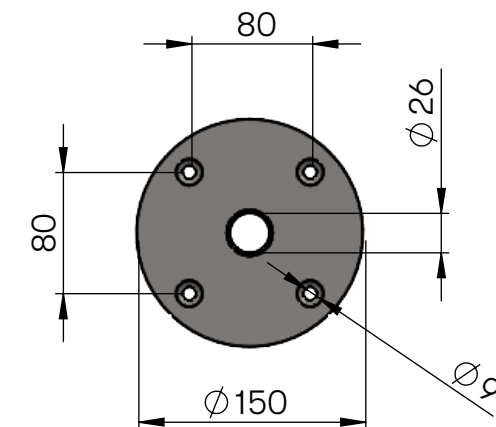
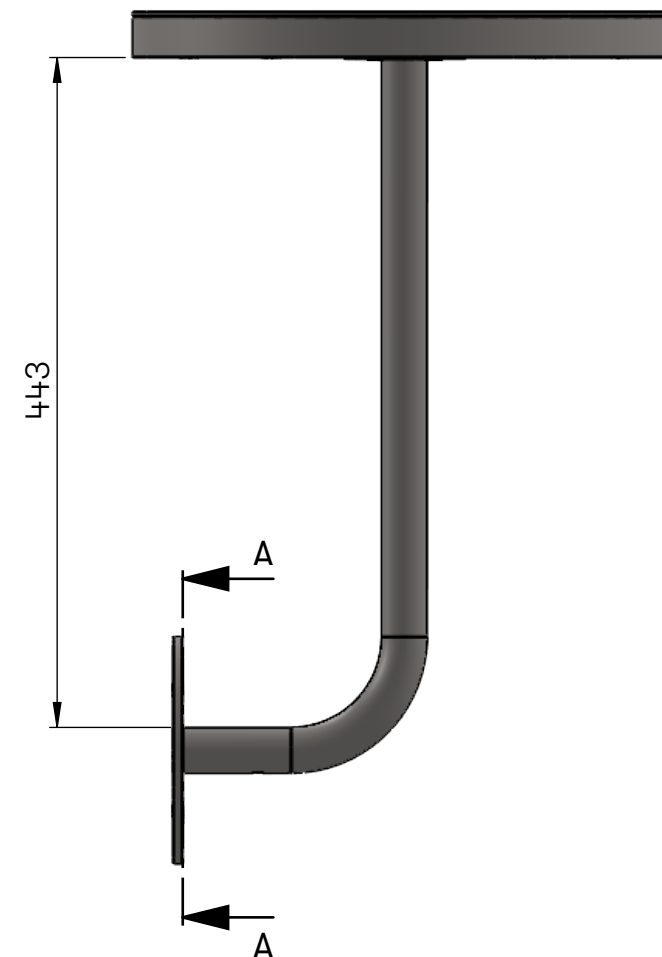
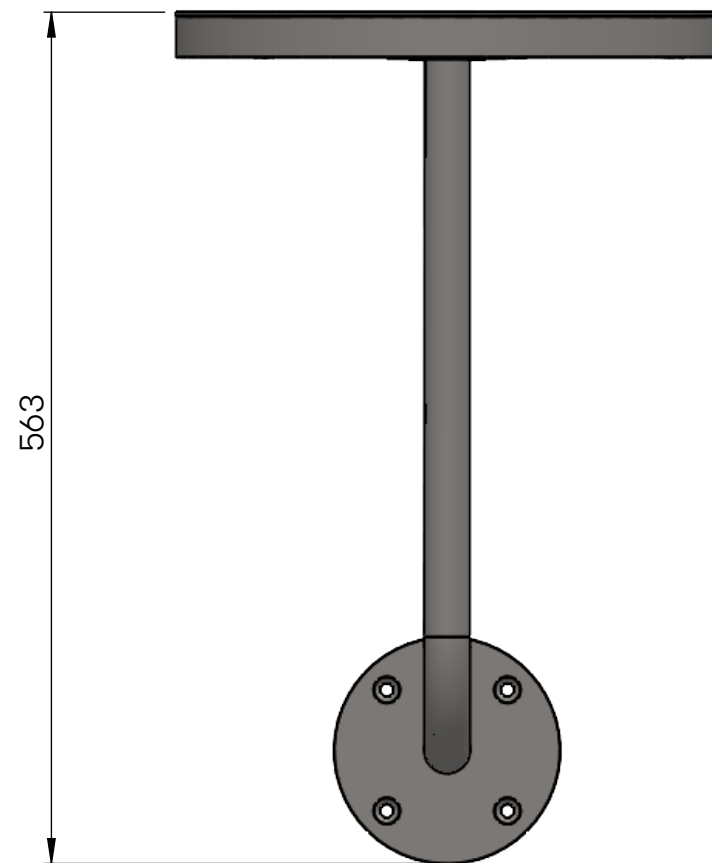
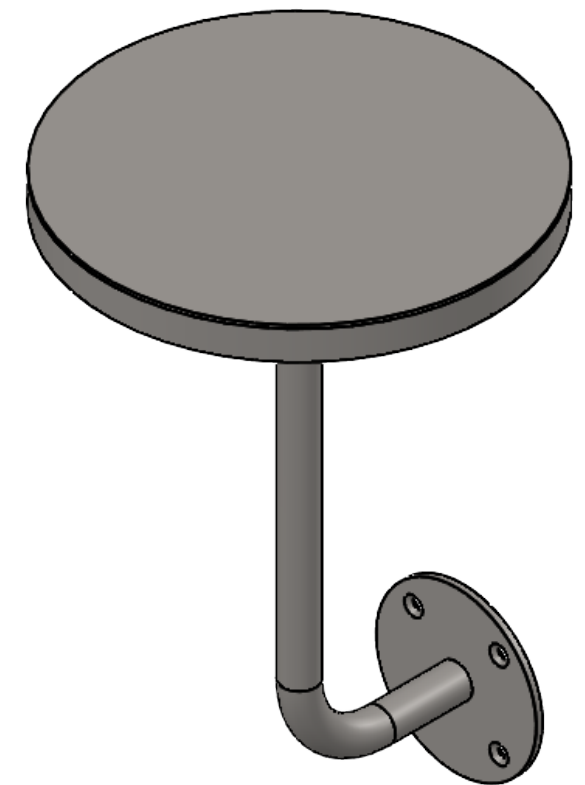
Dimensions

Odin Sollie
25-12-12



U12-18
Ljusnan accessory table with lighting
Delivered fully assembled; requires mounting

Includes 24V LED strip and 1.6 m low-voltage cable
Driver not included



SECTION A-A
SCALE 1 : 5

Ljusnan accessory table with lighting

Odin Sollie
25-12-12

Installation and mounting

Ljusnan is delivered with an LED strip and low-voltage cable. Before the table is mounted to a wall or retaining wall, it must be connected to a driver by a certified electrician. The driver is not supplied by Nola but must be sourced by the electrician. For details regarding the LED strip, see the separate product data sheet.

The table's cable exits through the back of the mounting plate. The driver's connection point must be accessible from the inside of the surface to which the table is being mounted.

Mounting

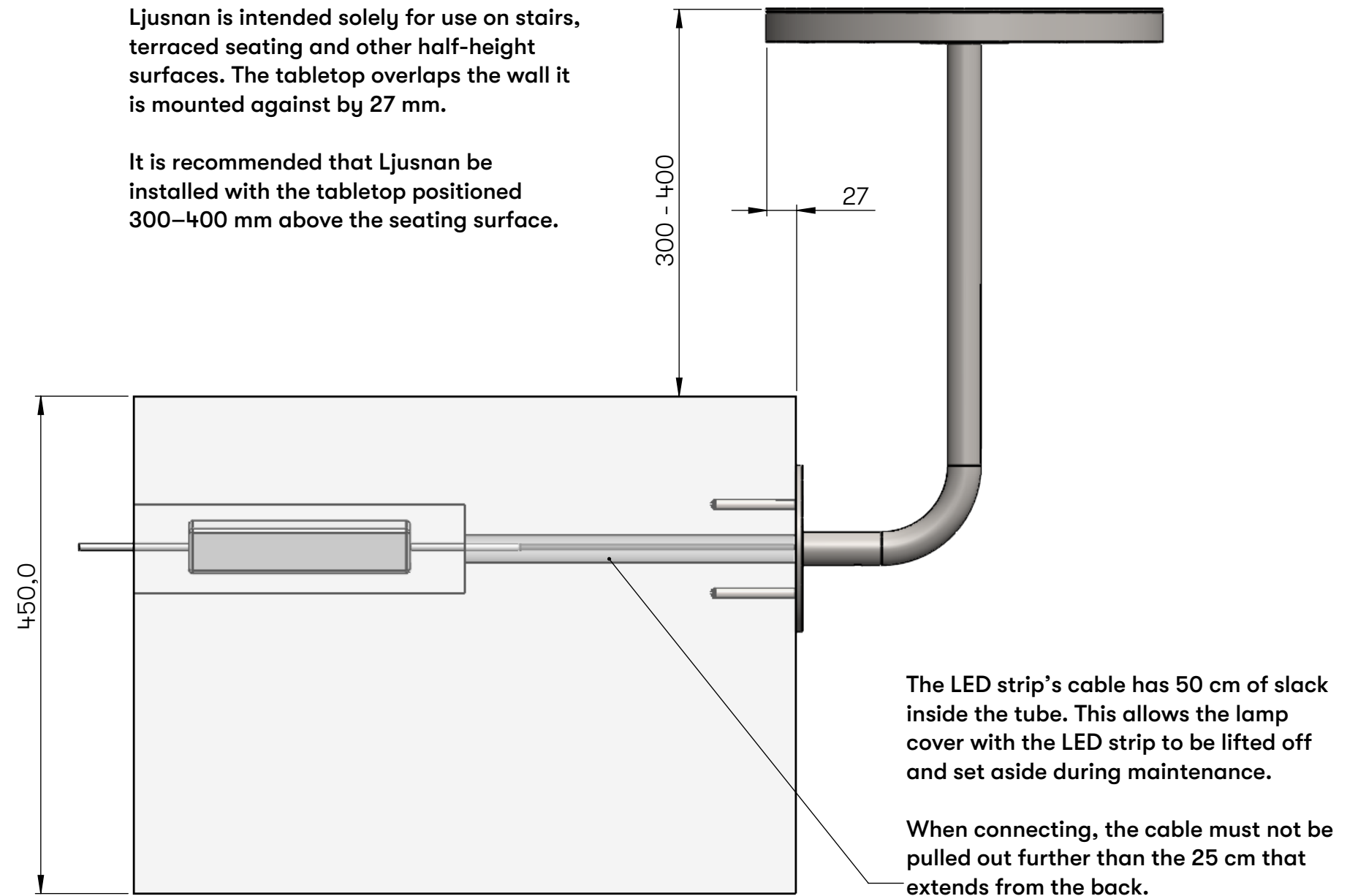
Drill the surface for mounting the table according to the hole pattern of the mounting plate. The tabletop has countersunk holes for attachment with 8 mm screws. Drill a hole for cable routing through the wall, centered between the four holes.

For installation on decking or a timber wall, do not use wood screws. Instead, drill through-holes and mount the table using bolts with nuts and washers on the rear side.

For installation on concrete or a stone wall, pre-drill for chemical anchors or expansion anchors and mount the table according to the instructions.

Ljusnan is intended solely for use on stairs, terraced seating and other half-height surfaces. The tabletop overlaps the wall it is mounted against by 27 mm.

It is recommended that Ljusnan be installed with the tabletop positioned 300–400 mm above the seating surface.



Ljusnan accessory table with lighting

Operation and maintenance

LED Strip Specifications

Model: Ledvance LS P - 1000/927/5/IP67

Ingress Protection: IP67

Voltage: 24V

Power: 9.5 W

Lifespan (L70/B50): 50,000 h (at T_c = 80 °C)

Service

Installation and handling of the LED strip and other electrical components must be carried out by a certified electrician.

For inspection of the LED strip and cleaning of the table's interior, the so-called outer cover is removed via the five M6 cap nuts on the underside.

Unscrew the five cap nuts and carefully hang the metal ring over the horizontal part of the tube frame. Then lift off the outer cover and place it on a clean surface that will not scratch it. With the outer cover removed, the table's interior is exposed for inspection and cleaning.

The rest of the table components remain in place and do not need to be handled.

If the LED strip needs to be replaced, the inner cover must also be lifted off. It is released via the four screws under the tube collar. There is 50 cm of excess cable inside the table tube, allowing the inner cover with the LED strip to be removed and set aside. Cut the cable approximately 20 cm below the strip, remove the old strip, and clean the surface if necessary. Apply the new strip and connect the cables using a quick connector. Since the cable's insulation is broken during this process, the quick connector must be re-insulated using heat shrink tubing or another standard method.

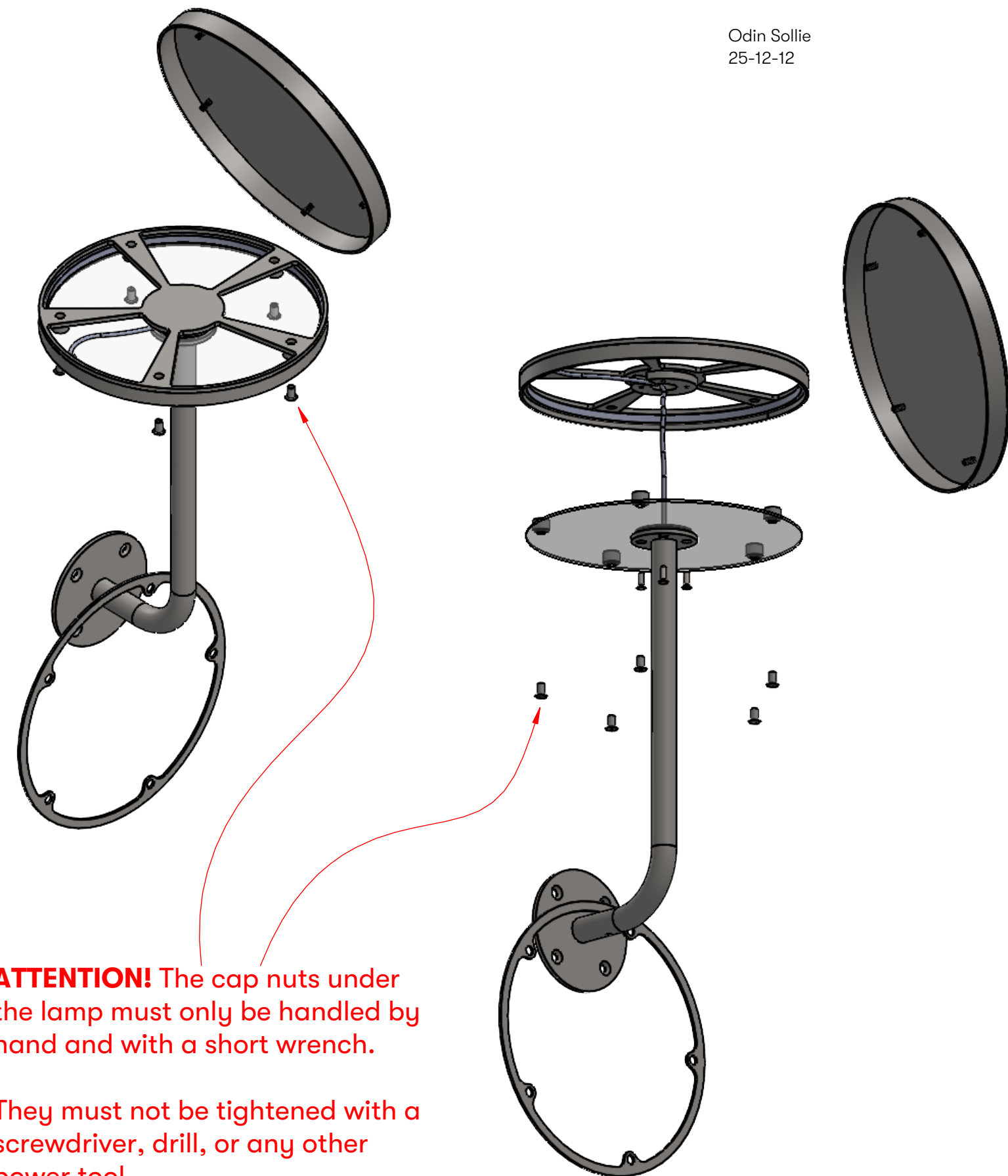
This procedure can also be performed if the acrylic sheet or metal ring needs to be replaced, as the cable runs through these parts.

Cleaning

The exterior of the table, including the underside, should be cleaned once a year. The interior should be cleaned as needed if the acrylic sheet becomes clogged with dirt or if insects have entered the table.

For further questions, please contact Nola.

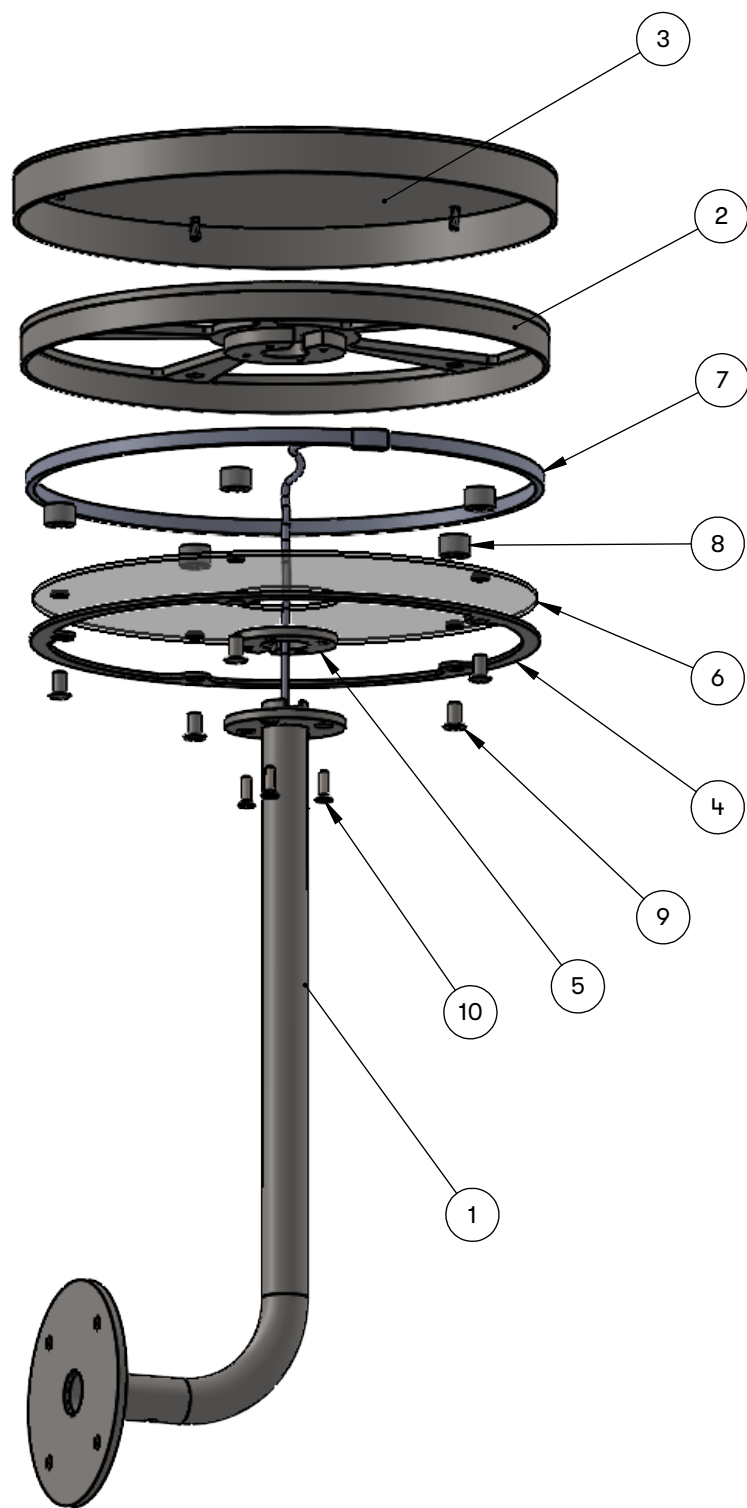
Odin Sollie
25-12-12



Ljusnan accessory table with lighting

BOM

Odin Sollie
25-12-12



Nr.	PART NUMBER	Description	Antal
1	U12-18-11	Ljusnan Bordsstativ	1
2	U12-18-12	Ljusnan Innerhatt	1
3	U12-18-13	Ljusnan Ytterhatt, rev 01	1
4	U12-18-14	Ljusnan Plåtring	1
5	U12-18-15	Ljusnan Kontaktskiva	1
6	U12-18-7	Ljusnan LED-akryl Ø335x3 mm, rev 01	1
7	Ledvance LS P - 1000/927/5/IP67	LED-list 1,1m+1,6m kabel, 9,5W IP67 2700K	1
8	RU201310.2N	Ackurat plastdistans	5
9	Hattmutter M6 insex	Hatt 15x2 mm, halslängd 15 mm	5
10	ISO 10642 - M6 x 20 - 20N	ISO 10642 - M6 x 20 - 20N	4