

nola®



Bornholm Furniture Group

Design Møller & Grønborg & NATiON + KSA DESIGN

In collaboration with Danish NATiON + KSA DESIGN and Møller & Grønborg, Nola has developed a neat, small furniture group consisting of a stackable two-seater sofa and a square table.

Bornholm furniture group is environmentally assessed via [Byggvarubedömningen](#) and [SundaHus](#) (oiled mahogany).

CERTIFICATION



Dimensions and weight

Length:
Table: 66 cm
Backed bench: 122 cm

Depth:
Table: 63 cm
Backed bench: 55 cm

Height:
Table: 71 cm
Backed bench: 83 mm, 66 cm, 45 cm

Bornholm Table

Length: 66 cm
Width: 63 cm
Height: 71 cm

Bornholm Park Bench

Length: 122 cm
Height: 83 cm
Armrest height: 66 cm
Sitting height: 45 cm
Depth: 55 cm

Length: 122 cm Depth: 55 cm Height: 83 cm, height armrest 66 cm, seat height 45 cm

Product numbers and combinations

B11- Startup cost for powder coating steel in a color other than standard.
06 Choose a RAL colour.
B11- Starting cost for another color of wood. Choose brown or grey for Linax or
07 an NCS color for painted wood. If you want the same color on both steel and wood, choose the RAL color for both.

U20-89 Bornholm table

U20-87 Bornholm backed bench

Append to product number

WOOD AND FINISH

MH for oiled mahogany.

If no letter is specified after the article number, you will get top-glazed pine.

Enter letter for color powder coating.

C for any other color than standard, start up fee added.

METAL SURFACE FINISH

G for green RAL6012.

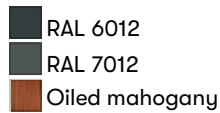
GR for grey RAL7012.

C for any other color than standard, start up fee added.

INSTALLATION TYPE

N for surface mount.

Standard colours



Materials and surface treatments

Pine

Nola's pine is of high quality and comes from sustainable forestry. Pine is an environmentally friendly, domestically produced material. Damaged or untreated pine is quite easily attacked by decomposition processes; therefore, it is particularly important to repair damaged surfaces.

Mahogany - FSC-certified

FSC-marked mahogany is a wood with good durability in the outdoor environment. In addition, it retains its color tone better than, for example, oak and teak. Mahogany lives and moves, sometimes more than teak.

Water-based glaze

Varnishing of wood is done with a water-based varnish. A water-based paint that is kinder to the environment. Under normal use, the paint has a good wear resistance and long durability.

Wood oil

Wood oil provides good protection against the stresses of the outdoor climate and at the same time highlights the wood's natural appearance and properties.

Steel

Nola uses high-quality steel with good strength in our products. Steel rusts if left untreated and must therefore be surface treated.

Electrogalvanized

Electrogalvanizing (also known as zinc plating) provides corrosion protection through the sacrifice of zinc ions. It is created via a zinc coating on the steel using an electric current.

Powder coating

Powder coating is a coating that is applied as a free-flowing, dry powder. Unlike conventional liquid paint, powder coating is usually applied electrostatically and then cured under heat or with ultraviolet light. The result is an even, hard-wearing coloured surface with the desired gloss level.

Assembly and placement

Freestanding

Freestanding product that is placed directly on the ground.

Surface mount

Can be bolted above ground, to the floor or to a cast-in-place foundation. Bolts not included.

Maintenance

Glans 60. Pulverlack går att beställa på sprayflaska.

Powdercoated steel

Products that are powder-coated can be touch-up painted with alkyd paint.

Water-based glazed pine

Products in varnished pine must be maintained regularly with alkyd paint. Maintenance intervals approximately 1 time per year. Damage and cracks should be repaired immediately. Touch-up paints in spray packaging are available in standard colors to order.

Oiled mahogany

Oiled mahogany should be oiled two times a year.

[Read more in our general maintenance advice at nola.se/en/care-and-maintenance](https://nola.se/en/care-and-maintenance)

Sustainability

CO₂-eq: 2,32 kg CO₂
Energy consumption: 308,50 MJ
Recycled materials: 0,12 %

Bornholm Table

CO₂-eq: 2,32 kg CO₂
Energy consumption: 308,50 MJ
Recycled materials: 0,12 %

Bornholm Park Bench

CO₂-eq: 0,37 kg CO₂
Energy consumption: 568,64 MJ
Recycled materials: 0,14 %

[View EPD for details](#)

Designers

Møller & Grønberg



NATION + KSA DESIGN





